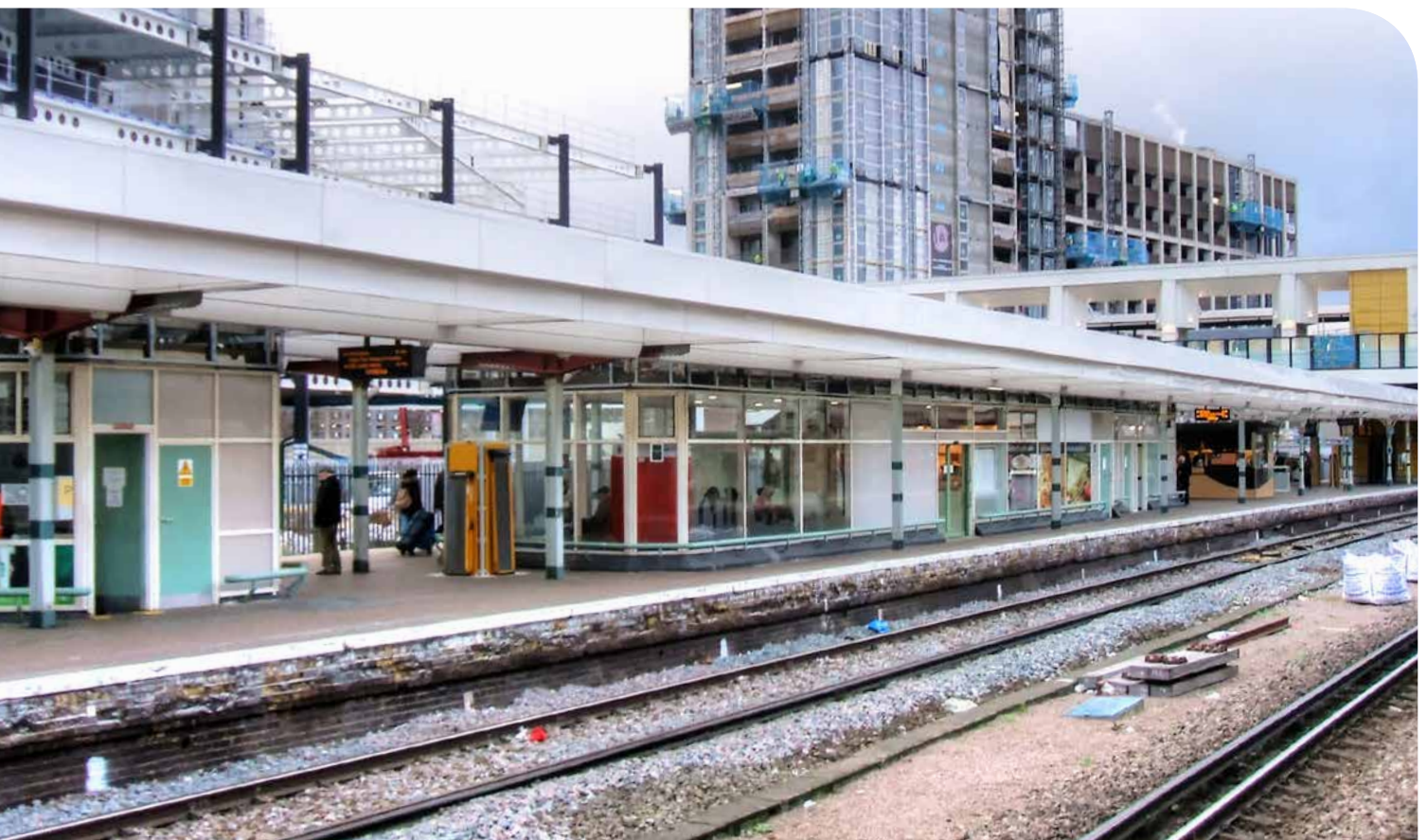


EAST CROYDON STATION GREATER LONDON

Product: Twinfix Multi-Link non-fragile glazed panels for platform canopy refurbishment



East Croydon station was originally opened in July 1841 and is now the busiest station in England outside central London, providing direct train services to London, the south coast and Bedfordshire.

An exciting and much needed £20M station redevelopment project commenced in 2010, involving construction of a new footbridge, a new station concourse area and

lifts. The aim was to transform the facility into a world class railway station and transport interchange.

A key part of the refurbishment was making sure the platform canopies were improved as these spaces were very dated, dark and in much need of upgrading. Getting this part right would transform these customer waiting areas – an important element of the whole scheme as these six platforms see hundreds of passengers passing through each day.

CASE STUDY 11

EAST CROYDON STATION

GREATER LONDON



Twinfix joined a dedicated team of professionals, from Network Rail Asset Managers to contractors and specialist architects who embarked on the task of ensuring the correct roof glazing was specified and installed on the platform canopies. After careful consideration the product that was chosen was the Twinfix modular Multi-Link non fragile panel glazed with 6mm opal solid polycarbonate. Just over 3,000 square metres of these rooflight panels were required to reglaze the six platforms at the station, supplied in some 1,800 panels delivered to site ready for quick installation.

The Multi-Link system was invented over 20 years ago and is a rather clever design of roof glazing. Each panel comprises a powder coated aluminium frame fitted with polycarbonate glazing. They are built completely off site, the work being carried out in the Twinfix quality controlled factory environment, reducing the risk – and cost – of site mistakes. They arrive on site fully glazed and ready for rapid installation. They have impressive spanning capabilities and a unique linking design feature that results in incredibly quick installation times, making the system very much suited to rail work with its restricted possession times.

So why was this product chosen for the East Croydon Station project? A Network Rail Senior Asset Manager on

the South East Route led the team that investigated the available options and specified the Multi-Link panel for a number of reasons:

- Appearance – The opal polycarbonate panels provide just the right level of diffused light transmission.
- Safety – The fact that this rooflight is non-fragile when tested to ACR(M)001:2014 was of great importance as its use helped meet the required CP5 safety goals.
- Off-site construction – Speed of installation was high on the list as disruption at this busy station needed to be kept to a minimum.
- Sustainability – These panels are virtually unbreakable in manufacture, transit and in situ. Unlike glass there will be no costs involved in replacing broken panels.
- Weight – Both the aluminium and the polycarbonate are light in weight compared with more traditional overhead glazing which makes them a great choice for a refurbishment project on an older station as their use can drastically reduce the load on the original building structure.

This project demanded a truly collaborative approach, and Twinfix worked closely with the Main Contractor and the installer to ensure that the panels were delivered just in time and that the installer teams were full trained. The result of this clever roof glazing system and an experienced roof glazing manufacturer is a good looking, safe, and long lasting roof over the platforms at East Croydon station.

Graham Richards, Senior Asset Manager Network Rail, comments: “We thought carefully before choosing the products and materials used on the canopy refurbishment scheme at East Croydon station. It was clear from the outset that this high profile hub station would require a specification befitting this location, we also wanted to ensure that the finished works would not be lost amongst the numerous improvement works recently carried out around the station areas. The Twinfix canopy glazing system was key to the overall design; safety, aesthetics, install speed are just some of the items we considered and we are extremely pleased with the results, they have surpassed our expectations.”

Published by



The Rooflight Association
Email: info@rooflightassociation.org
www.rooflightassociation.org

The Rooflight Association member company



Twinfix Ltd
201 Cavendish Place, Birchwood, Warrington, Cheshire WA3 6WU
Tel: 01925 81311 Fax: 01925 852955
Email: enquiries@twinfix.co.uk www.twinfix.co.uk